

R700A Outdoor 4G/LTE CPE

External Antenna Port

Cellular specifications

Frequency and Speeds	LTE Band: 1,2,3,4,5,7,8,9,12,13,18,19,20,26,28,29,30,32,41,42,43,46,48,66 (CBRS supported, MFBI supported) LTE Bandwidth: Up to 60 MHz (CAT 12, Carrier Aggregation) LTE Data Rate: Downlink up to 600 Mbps Uplink up to 150 Mbps WCDMA Band: B1, B5, B6, B8, B9, B19 WCDMA Rate: Downlink: 42Mbps, Uplink: 5Mbps
----------------------	---

Router Features

Security	Multiple VPN pass-through (IPSec, PPTP, L2TP), Stateless and SPI Firewall, Internet Filter, Web Filter
NAT-NAPT	Single Port Forwarding, Port Range Forwarding, Port Range Triggering, Port Filtering, IP Filtering, DMZ, UPnP, Multicast Pass-Through
DNS	DNS Agent, DDNS
Other	IPv4 and IPv6, TCP, UDP, ICMP, ARP, DHCP Server/Client, DHCP Reservation, HTTP/HTTPS, NTP, ALGs, Customization feature: QOS, VLAN(optional)



Software

CPE Operation Mode	Router mode / Bridge mode(optional)
Connection Status in Web GUI	Network name, Signal strength, Roaming indication, Radio technology, Radio network parameters, Connection status, Connection time, Connection Statistics
Connection management	Connection on demand, Auto Connection, Auto APN matching with USIM, APN database update through browser-based GUI, APN profile, PIN management, Preferred radio network type selection
Support FW version upgrade	Yes
Device Management	TR-069, SNMP, Remote GUI Log-in
System Security	Two types of user account: User and Operator. Every user account has own password protected mechanism
Browser-based Administration GUI	IE, Firefox, Safari, Chrome

Interface Type

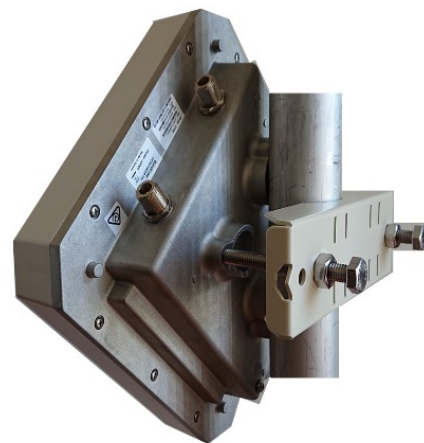
LAN	1 x GigE Ethernet port (RJ45)
Indicator LEDS	Power (1), Signal (1), Signal Strength (2)
Antenna	2 x "N" Waterproof Connectors for attachment to External Antenna Diversity Antenna Required LTE MIMO: Downlink 2x2
SIM/UIIM	1 x SIM slot for external 2FF SIM plug-in with sealing protection
Power	Standard 3-PIN power jack, reverse-voltage and overvoltage protection
Reset	Restore the router to its original factory default settings

Power Supply / Accessories

Power Adaptor	Input : 100V~240V, 50Hz~60Hz Output: 48V DC, 1A Power over Ethernet (PPoE) Injection
Voltage Range	48V DC
Mounting Bracket	Fixture (match to the back design) and screws to mount on pole. Left-right rotatable
Ethernet Cables	Various lengths – enquire with NB-TEC

Characteristics

Working temperature	-40 ~ +65 deg C
Storage temperature	-40 ~ +70 deg C
Humidity	5%-90% non condensing
Dimensions	247 x 247 x 107 mm
Weight	1.5 Kg
Water proof and Dust proof	IP66
Certification Conformance	Module CE, FCC, GCF, IC, JRF/JPA, NCC, PTCRB, ANZ RCM



R700A (Ext Port) - rear view

